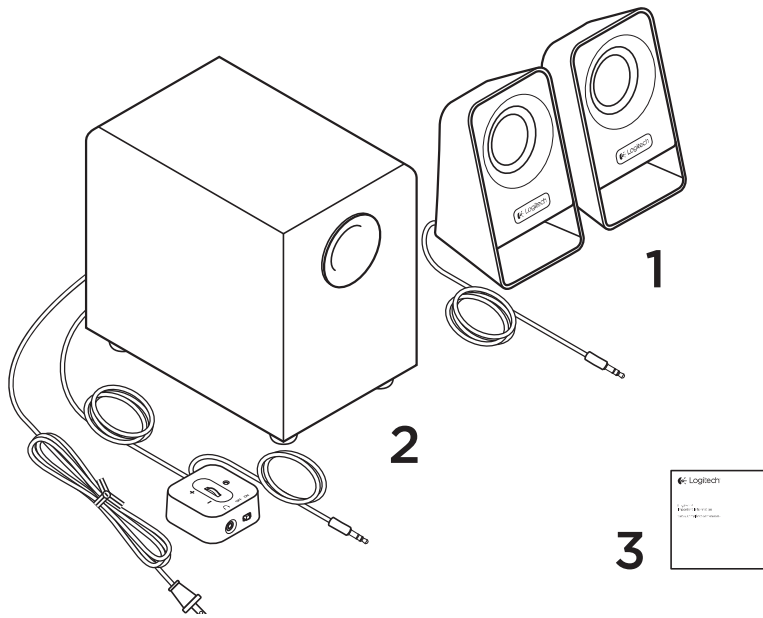




## What's in the box

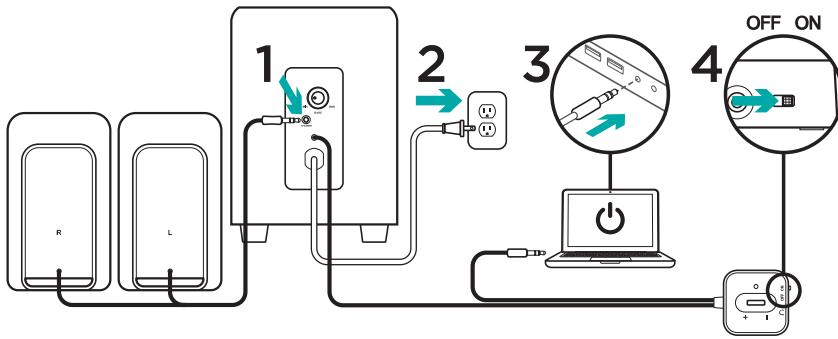


- 1. 2 satellite speakers
- 2. Subwoofer

- 3. User documentation



## Setup



1. Plug the satellites cable into the subwoofer jack.
2. Plug the power cord into an electrical outlet.
3. Insert the 3.5mm plug from the wired remote into the audio jack on your device (computer, tablet, smartphone, etc).
4. Switch ON the ON/OFF button on the wired remote to turn the multimedia speaker Z213 ON.

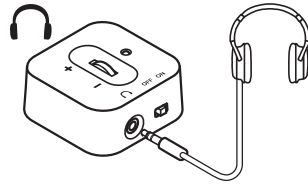


## Features



### Adjusting speaker volume

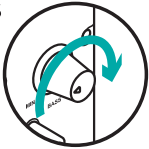
Adjust the Multimedia Speaker Z213 volume with the wheel located on the middle of the wired remote.



### Using headphones

Most types of analog headphones with a 3.5mm connector can be plugged into the headphone jack at the front of the wired remote. When you plug in the headphones, the speaker is muted automatically. With headphones plugged into your Multimedia Speaker Z213, the main control volume is through your audio device (computer, tablet or smartphone). Headphone volume will not be affected by volume adjustment on the wired remote.

### BASS



### Adjusting bass controls

To adjust the bass level of your Multimedia Speaker Z213, turn the bass control clockwise located at the back of your subwoofer.