

logitech®

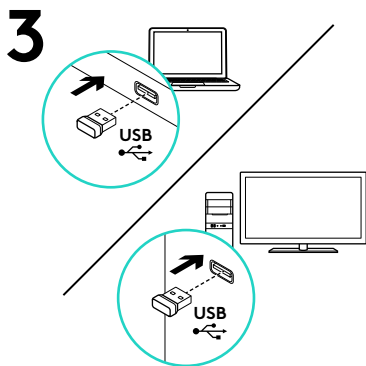
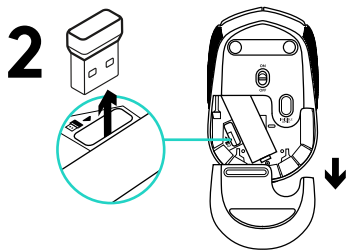
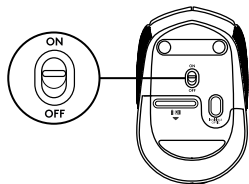
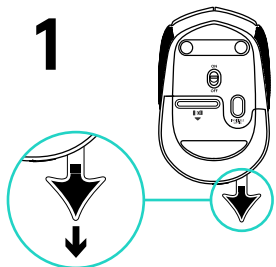
M170/M171 Reliable wireless connectivity



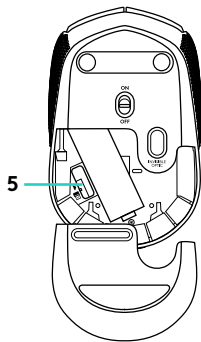
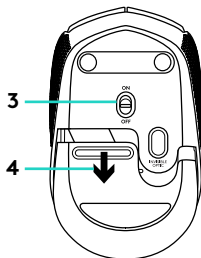
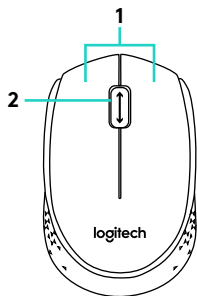
Setup Guide

Languages

English	3	Česká verze	48
Deutsch	6	Slovenčina	51
Français	9	Українська	54
Italiano	12	Eesti	57
Español	15	Latviski	60
Português	18	Lietuvių	63
Nederlands	21	Български	66
Svenska	24	Hrvatski	69
Dansk	27	Srpski	72
Norsk	30	Slovenščina	75
Suomi	33	Română	78
Ελληνικά	36	Türkçe	81
По-русски	39	84 العربية	
Po polsku	42	87 עברית	
Magyar	45		



Features

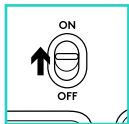


1. Left and right mouse buttons
2. Scroll wheel
Press the wheel down for middle button (function can vary by software application)

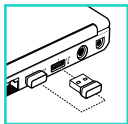
3. On/Off slider switch
4. Battery door release
5. USB Nano-receiver storage

Help with setup: Mouse is not working

1



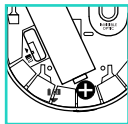
2



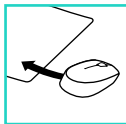
3



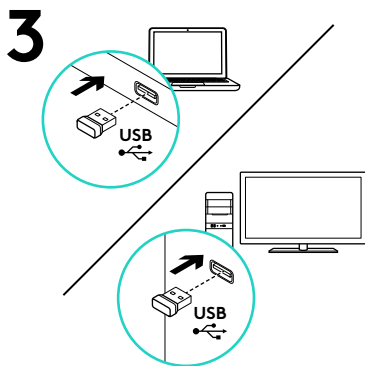
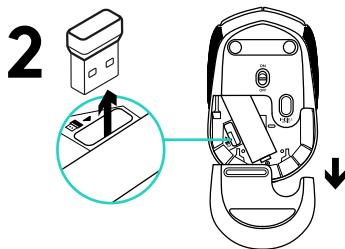
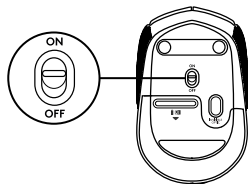
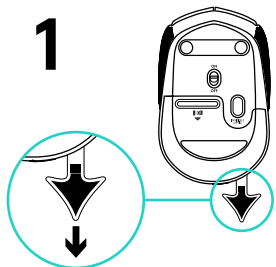
4



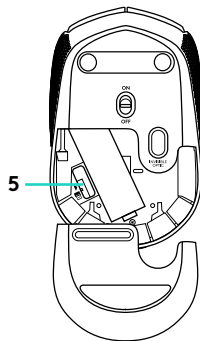
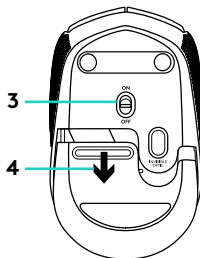
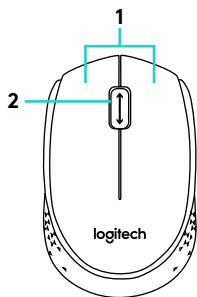
5



1. Is the mouse powered on?
2. Is the Nano receiver securely plugged into a USB port? Try changing USB ports.
3. If the Nano receiver is plugged into a USB hub, try plugging it directly into a USB port on your computer.
4. Check the orientation of the battery inside the mouse.
5. Try a different surface. Remove metallic objects between the mouse and the Nano receiver.
6. For Windows® operating systems, reconnect the mouse with the Nano receiver by launching the Connect utility from www.logitech.com/connect_utility.



Componentes

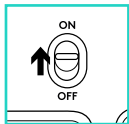


1. Botones izquierdo y derecho
2. Botón rueda
Pulsa el botón rueda para usarlo como botón central (la función puede variar según la aplicación de software).

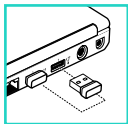
3. Conmutador de encendido/apagado
4. Botón de compartimento de pilas
5. Almacenamiento del nano receptor USB

Ayuda con la instalación: El ratón no funciona

1



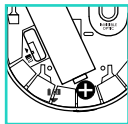
2



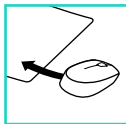
3



4



5



1. ¿Has encendido el ratón?
2. ¿Está el nano receptor conectado correctamente a un puerto USB? Prueba otros puertos USB.
3. Si el nano receptor está conectado a un concentrador USB, conéctalo directamente a un puerto USB del ordenador.
4. Comprueba la orientación de la pila dentro del ratón.
5. Prueba el ratón en otra superficie. Retira cualquier objeto metálico situado entre el ratón y el nano receptor.
6. En los sistemas operativos Windows®, vuelve a conectar el ratón con el nano receptor iniciando la Utilidad de conexión desde www.logitech.com/connect_utility.

